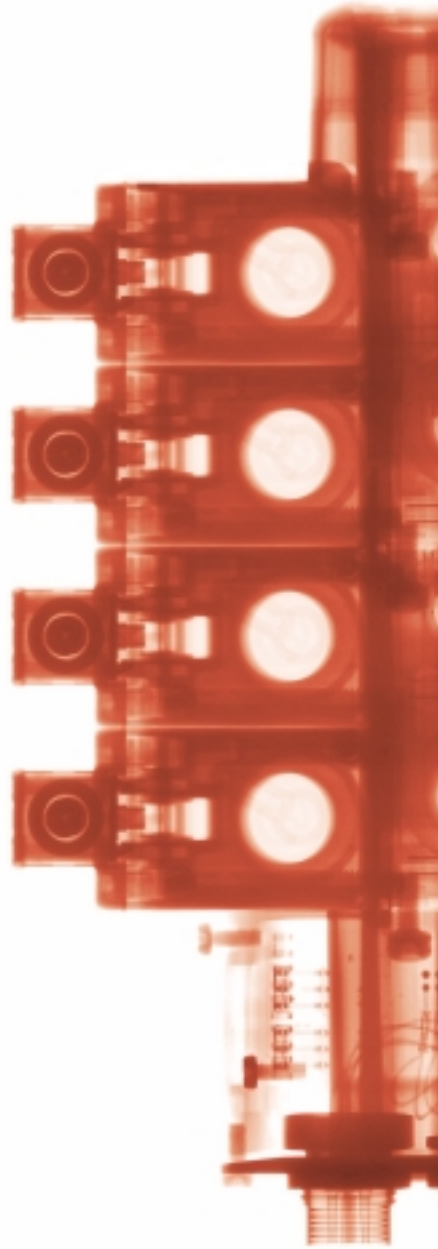




More . . .
Modular
Versatile
Reliable
Maintenance-friendly

VS18/VS26 VALVE ADVANTAGE



CREATING COMPETITIVE ADVANTAGE...

Field expandability has reached new levels with Norgren's VS18 and VS26 valve range. Whether using a simple multipole or a complex fieldbus system, expanding the size of your valve island to match the changing demands of your equipment is a simple "plug-and-play" experience. Norgren's plug-in Printed Circuit Board (PCB) technology takes only **seconds to install** and additional sub-bases can be attached with only two screws.

Both the VS18 and VS26 are offered with **two unique spool technologies**. To maximize the speed of your pneumatic system, use Norgren's soft seal spool to achieve **enhanced flow rates**. For **maximum reliability**, our glandless spool and sleeve delivers hundreds of millions of trouble-free cycles. Or incorporate both spool technologies within the same valve island to optimize your machine's performance.

Norgren's VS18 and VS26 give you the versatility to choose the features you need with the modularity to easily expand and add accessories. By combining flexibility and Swiss-engineered quality, Norgren has created a **no-compromise valve range** with **unlimited ability**.



...THROUGH NO COMPROMISES!

MODULAR

Field expandable in single stations
Any number of valves up to 16
Extensive sandwich accessory options
Two sizes of plug-in sub base valves

VERSATILE

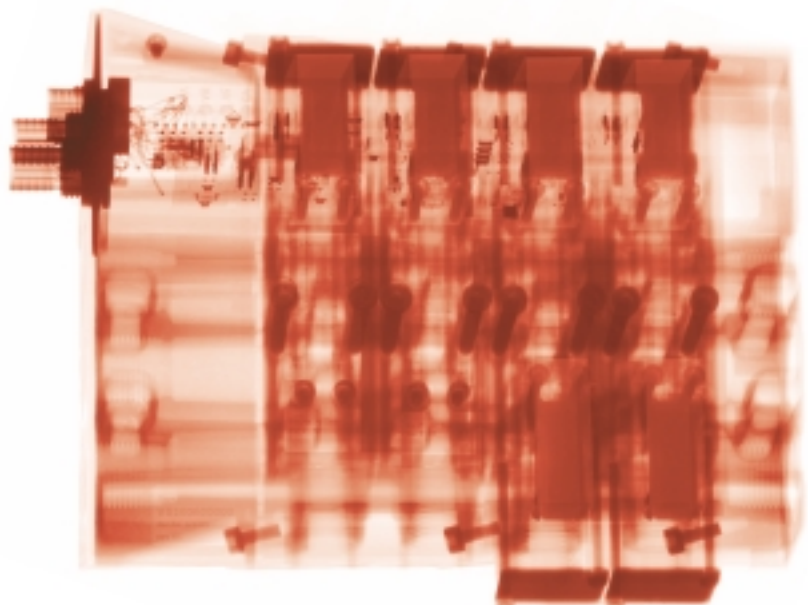
Two spool technologies with unique advantages
Universal PNP/NPN 24V DC multipole
Eight valve configurations
Two multipole voltages
Six integrated fieldbus protocols
Numerous porting and manual override options
Millions of possibilities

RELIABLE

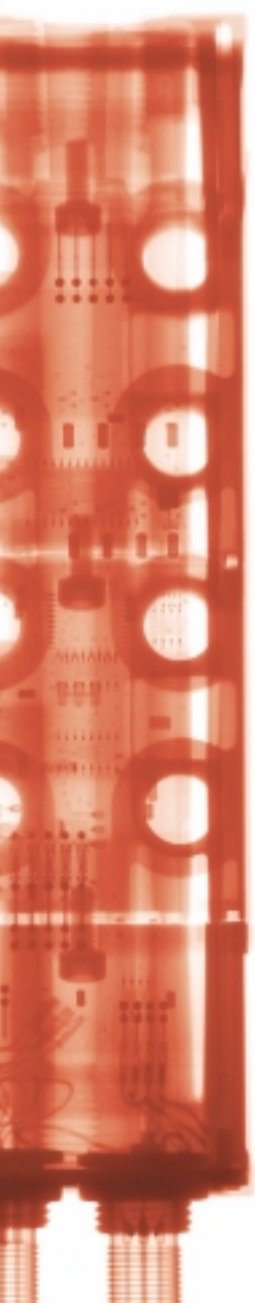
200 million cycles valve life
Robust construction
ATEX, IP 65, UL and NEMA 4
Durable electrical technology

MAINTENANCE FRIENDLY

Simple plug-in sub base valve exchange
Interruption-free valve replacement option
Easy exchange of system components



VS18/VS26 PLUG-IN TECHNOLOGY



PNEUMATICS

Two sizes, 18 mm and 26 mm width
Valve islands up to 16 stations (32 solenoids)
ISO 15407-2 standard
Simple multi-pressure functionality
2 x 3/2 valves in one body



MULTIPOLE

24V DC and 115V AC voltage options
Wide range of electrical connections
Field expandable up to four additional stations
One universal 24V DC PCB for both PNP/NPN



FIELDBUS

Compact size through integrated electronics
Field expandable up to four additional stations
Easily incorporated with Norgren's FD67 Fieldbus I/O
Wide range of protocols offered

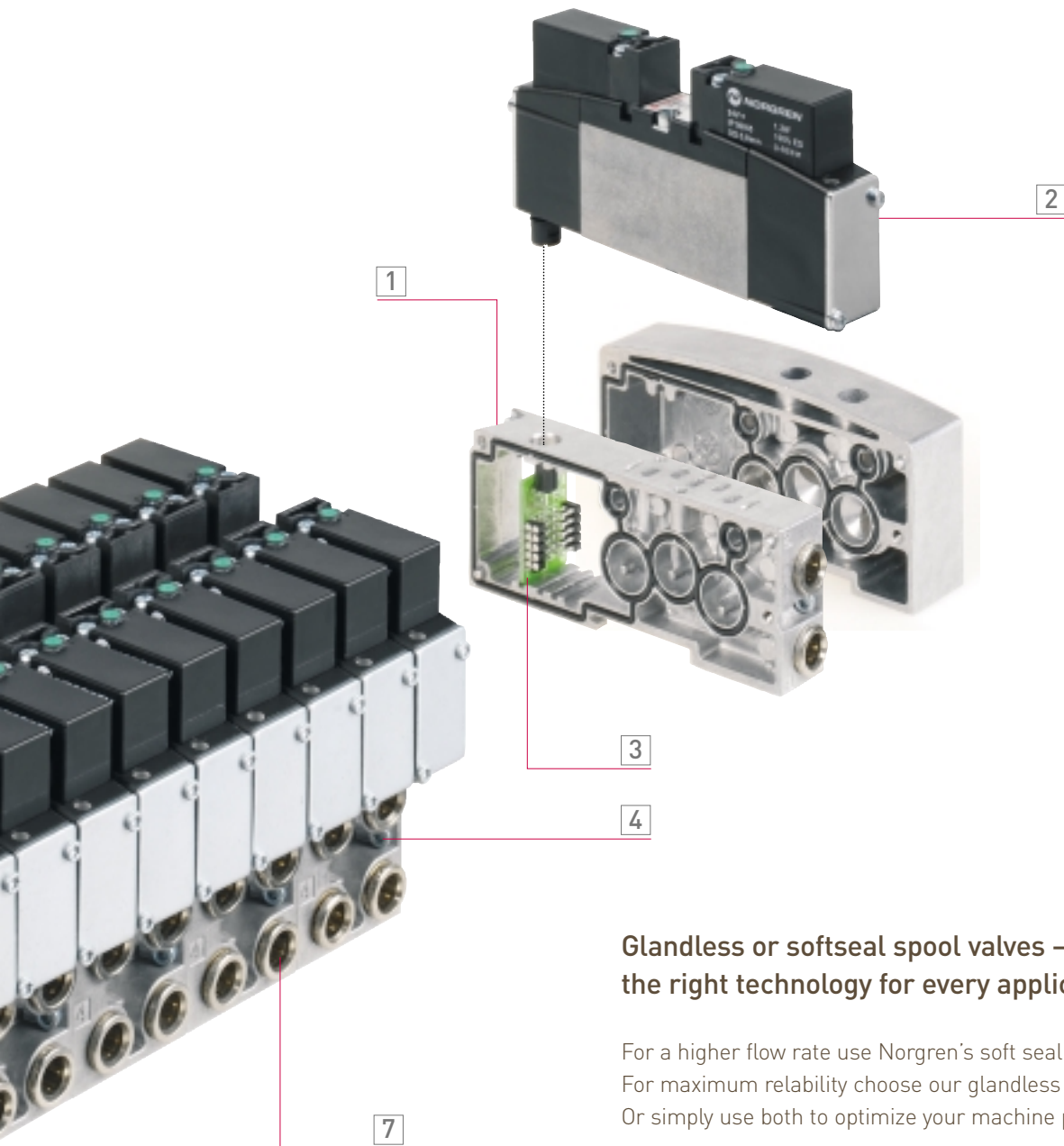


VS18/VS26 ADVANTAGE

ROBUST CONSTRUCTION FOR YOUR TOUGHEST APPLICATIONS.

- 1 Add up to 4 stations easily**
No need to disassemble the valve island (no tie rods)
- 2 Simple installation**
Plug-in sub base valve
- 3 Correct connection guaranteed**
Simple plug-in electronics
- 4 Only seconds to install**
2 screws only for additional sub-base attachment
- 5 Total reliability**
Glandless spool and sleeve deliver millions of trouble-free cycles
- 6 Maximum speed**
Soft seal spool for enhanced flow rates
- 7 Integrated fittings**
Reduce installation time, minimise leak paths.

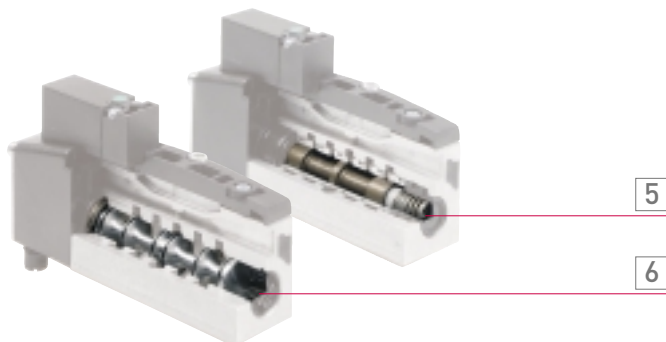




Glandless or softseal spool valves – the right technology for every application

For a higher flow rate use Norgren’s soft seal spool.
 For maximum reliability choose our glandless spool technology.
 Or simply use both to optimize your machine performance.

Size	Spool type	Flow	Max. op. pressure	Lifetime
VS18	Glandless	550 l/min	16 bar	200 million cycles
VS18	Softseal	650 l/min	10 bar	50 million cycles
VS26	Glandless	1000 l/min	16 bar	200 million cycles
VS26	Softseal	1350 l/min	10 bar	50 million cycles



VS18/VS26 ACCESSORIES



PRESSURE CONTROL

Four choices of pressure regulator sandwich plates provide individual pressure and force control as well as optimized air consumption.



FLOW CONTROL

Flow control sandwich plate provides actuator speed control.



INLET AIR CONTROL

Single valve shut off plate allows exchange of valve while valve island is pressurised.



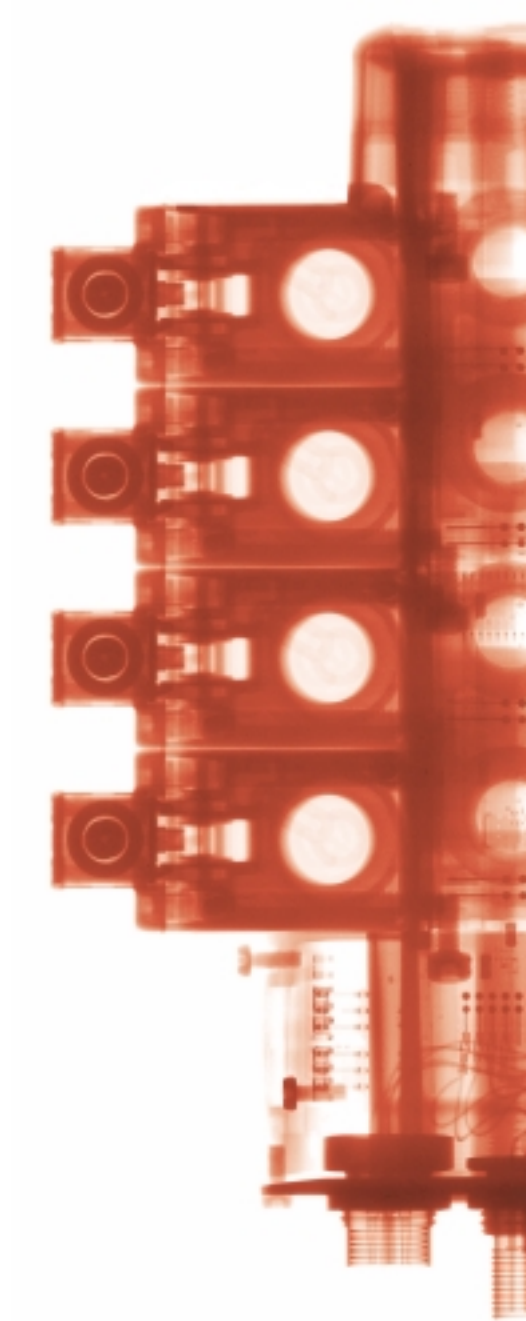
MULTI-PRESSURE CONTROL

Intermediate supply/exhaust module and blanking discs enable simple and sophisticated multi-pressure designs.



SINGLE STATION SUB-BASE

For applications requiring single valves located remotely from the valve island.



AUSTRALIA

Tel: +61 3 921 30 800
 Fax: +61 3 921 30 890
 enquiry@norgren.com.au

AUSTRIA

Tel: +43 22 36 63 520
 Fax: +43 22 36 63 520 20
 enquiry@at.norgren.com

BELGIUM & LUXEMBURG

Tel: +32 2 376 60 20
 Fax: +32 2 376 26 34
 enquiry@be.norgren.com

BRAZIL

Tel: +55 11 5698 4000
 Fax: +55 11 5698 4001
 vendas@norgren.com.br

CANADA

Tel: +1 905 625 4060
 Fax: +1 905 625 9501/8273
 inquiry@norgrencanada.com

CHINA

Tel: +86 21 64 85 69 09
 Fax: +86 21 64 95 60 42
 norgren@online.sh.cn

CZECH REPUBLIC

Tel: +420 465 612 879
 Fax: +420 465 612 908
 enquiry@cz.norgren.com

DENMARK

Tel: +45 44 91 41 66
 Fax: +45 44 91 15 60
 norgren@norgren.dk

EASTERN EUROPE

Tel: +43 22 36 63 520
 Fax: +43 22 36 63 520/124
 enquiry@at.norgren.com

FINLAND

Tel: +358 95 712 140
 Fax: +358 95 712 1440
 arki@imi-norgren.fi

FRANCE

Tel: +33 1 60 05 92 12
 Fax: +33 1 60 06 08 52
 norgren@norgren.fr

GERMANY

Tel: +49 2802 49-0
 Fax: +49 2802 49356
 info@norgren.de

HONG KONG

Tel: +852 2492 7608
 Fax: +852 2498 5878
 enquiry@hk.norgren.com

HUNGARY

Tel: +36 1 284 9000
 Fax: +36 1 284 8980
 budapest@norgren.hu

INDIA

Tel: +91 11 2681 7933
 Fax: +91 11 2681 7932
 pneumatics@norgren.co.in

IRELAND

Tel: +353 1 8300 288
 Fax: +353 1 8300 082
 norgren@indigo.ie

ITALY

Tel: +39 039 60 631
 Fax: +39 039 60 63 301
 d.aziendale@norgrenitalia.it

JAPAN

Tel: +81 6 6876 8913
 Fax: +81 6 6876 8929
 Japan@imi-norgren.com

MALAYSIA

Tel: +60 3 5121 9255
 Fax: +60 3 5121 2889
 enquiry@norgren.com.my

MEXICO

Tel: +52 55 5565 7521
 Fax: +52 55 5565 7072
 neumatica@norgren.com.mx

NETHERLANDS

Tel: +31 20 6822751
 Fax: +31 20 6820983
 enquiry@nl.norgren.com

NEW ZEALAND

Tel: +64 9 579 0189
 Fax: +64 9 526 3398
 enquiry@norgren.co.nz

NORWAY

Tel: +47 67 90 82 01
 Fax: +47 67 97 06 24
 norgren@norgren.no

POLAND

Tel: +48 22 871 7880
 Fax: +48 22 871 7881
 biuro@pl.norgren.com

SINGAPORE

Tel: +65 6862 1811
 Fax: +65 6862 1916/17
 enquiry@sg.norgren.com

SLOVENIA

Tel: +386 4 531 7550
 Fax: +386 4 531 7555
 info@si.norgren.com

SPAIN

Tel: +34 93 748 9800
 Fax: +34 93 783 0838
 norgren@norgren.es

SWEDEN

Tel: +46 40 59 51 00
 Fax: +46 40 49 50 90
 info@norgren.se

SWITZERLAND

Tel: +41 71 973 82 00
 Fax: +41 71 973 82 01
 norgren@norgren.ch

UK

Tel: +44 1543 265 000
 Fax: +44 1543 265 811
 enquiry@uk.norgren.com

USA

Tel: +1 303 794 2611
 Fax: +1 303 795 9487
 inquiry@usa.norgren.com

Supported by distributors worldwide

www.norgren.com

The Roundel, 'Norgren' and 'IMI' are registered trade marks © IMI Norgren Limited 2004. Due to our policy of continuous development, Norgren reserve the right to change specifications without prior notice.

z6709 UK/03/04